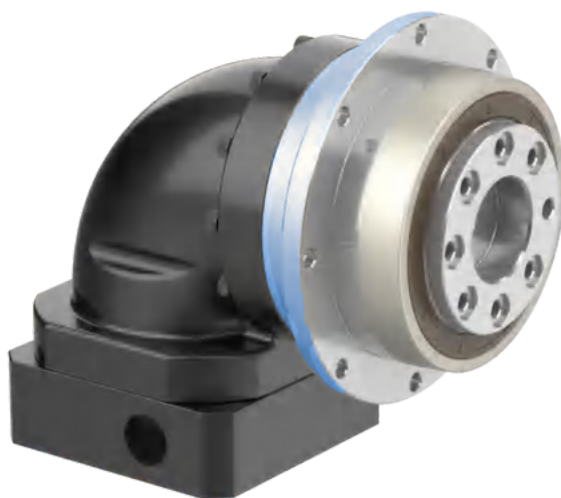


SERIE MADR



Taglia	64, 90, 110, 140, 200, 255	
Rapporti S1	Nm	4, 5, 6, 7, 8, 10, 14, 20
Rapporti S2	Nm	25, 35, 40, 50, 70, 100, 140, 200
Gioco angolare S1	arc min	$P1 \leq 5 / P2 \leq 7$
Gioco angolare S2	arc min	$P1 \leq 7 / P2 \leq 10$
Rumore	db	$\leq 63-72$

Taglia	Forza assiale ammissibile	Rigidità torsionale
	N	Nm/arcmin
64	1050	13
90	2850	31
110	2990	82
140	10590	151
200	16660	440
255	-	-